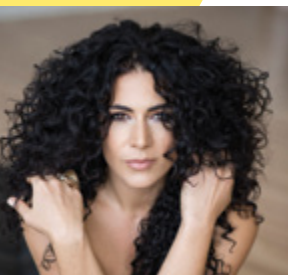


# LiveConnections

celebrating 10 YEARS of socially engaged music-making

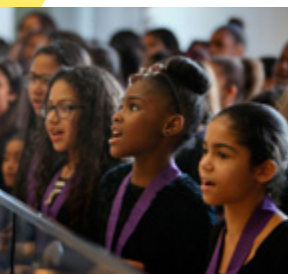


## Joanna Pascale + Sister Cities Girlchoir

Sunday, December 9, 2018

3:00 PM | \$27/\$22 (including fees)  
World Cafe Live, 3025 Walnut St., Philadelphia

Jazz vocalist Joanna Pascale and the Sister Cities Girlchoir join together for a program that celebrates the talents of women and girls in our community. Featuring new choral work based on Pascale's critically acclaimed show "Language of Flowers," as well as works by female composers and lyricists from the Great American Songbook.



## A Song Everyone Can Sing: a Community Sing featuring VOCES8

Sunday, March 10, 2019

3:00 PM | FREE (registration required)  
Temple Performing Arts Center  
1837 N. Broad St., Philadelphia

We're dreaming big about accessibility and inclusion in our city. Our multi-media music extravaganza welcomes EVERYONE to make music together. The cornerstone is a new choral work that invites people with diverse abilities to participate through singing, movement, visuals and technology. Collaborators include renowned *a cappella* ensemble VOCES8, composer Jay Fluellen, movement artist Shavon Norris, poet Daniel Simpson, Drexel University's ExCITe Center and numerous choirs from schools and human service organizations.

+ [Bridge Sessions](#) for schools on March 11



## Imani Winds

Friday, May 3, 2019

8:00 PM | \$32/\$22 (including fees)  
World Cafe Live, 3025 Walnut St., Philadelphia

Bridging American, European, African and Latin American traditions, Imani Winds creates adventurous and inspiring programs. Join us for a fresh take on chamber music with one of the best ensembles around.



TICKETS & INFO: [liveconnections.org](http://liveconnections.org)



# LiveConnections

celebrating 10 YEARS of socially engaged music-making



## Education

LiveConnections' educational programs use music to spark passion, boost learning, and connect participants to their own communities and the broader world.

Our programs feature world-class artists representing diverse music traditions and help participants develop 21st-century skills such as creativity, collaboration and communication.



Our **Bridge Sessions** at World Cafe Live blend live performance with hands-on participation, allowing groups from schools or human service organizations to experience the joy and power of music. Topics include "World of Percussion," "Cybersounds" and "Voices & Bodies in Social Action," among many others.

Our **in-school and after-school residencies**, developed in collaboration with Philadelphia public schools, provide ongoing opportunities for youth to participate in percussion, storytelling, songwriting and music production. Recent projects have included "What's Going On," "Immigrant Songs" and an afterschool percussion ensemble.



For more information, visit our website or contact [program@liveconnections.org](mailto:program@liveconnections.org).

## 10<sup>th</sup> Anniversary BIG HURRAH

Monday, November 12, 2018

5:30–9:00 PM | \$100 advance, \$125 day-of  
World Cafe Live, 3025 Walnut St., Philadelphia

Join us to celebrate 10 years of LiveConnections, with spotlights on our collaborative student album **WHAT'S GOING ON** (created with Hill-Freedman World Academy), accessibility initiative **A SONG EVERYONE CAN SING**, and performances by LiveConnections artists and students.

Our 4th annual Connector Award honors **Leonard Haas**, professional actor, Vice Chair of the William Penn Foundation and Trustee of the Wyncote Foundation. Performances feature **Jay Fluellen**, **Denice Frohman**, **Andrew Lipke**, **Shavon Norris**, **Luke Carlos O'Reilly**, **Kristal "Tyte" Oliver**, **Joanna Pascale**, **Josh Robinson**, **Alex Shaw**, students from **Hill-Freedman World Academy**, and more! All proceeds benefit LiveConnections' educational and community programs.

TICKETS & INFO: [liveconnections.org](http://liveconnections.org)

